

# **STEAM IRONING PRESS INSTRUCTION BOOK**

**SP 4500 ecofibres®**



**Congratulations on purchasing this Domena Ironing press SP4500 ecofibres®**

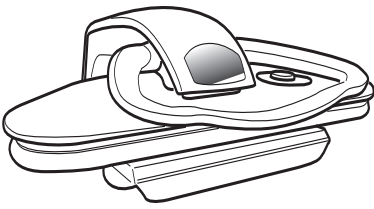
**ecofibres® are mainly made from natural fibres such as fine shavings from trees like spruce. This allows a reduction in unit weight, and ensures a total recycling of the material.**

**Natural fibres are a renewable source, which allows the material to keep its original technical properties whilst remaining ecological. ecofibres® are totally recyclable, and reduce the use of petrochemicals in manufacturing.**

**SP4500 ecofibre® is the first ecological iron press which also allows the user to realise 50% savings in electricity consumption and 50% savings in water thanks to the ECO settings.**

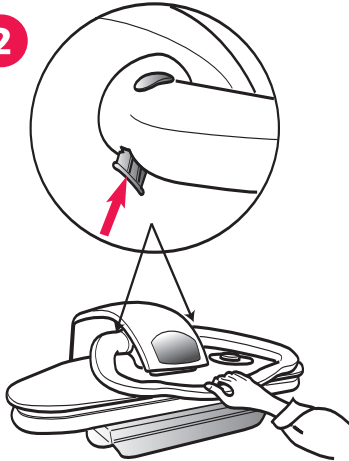
# QUICK START GUIDE

1



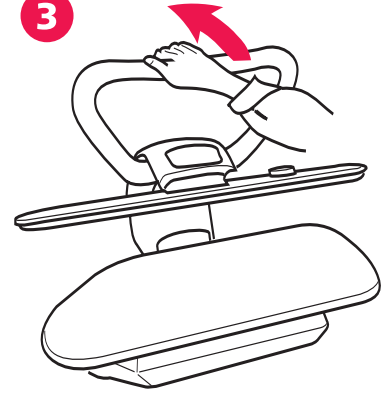
Unpack the appliance, and lay on a stable, heat resistant surface.

2



Gently press the handle down and push the two locking buttons on the handle upwards.

3



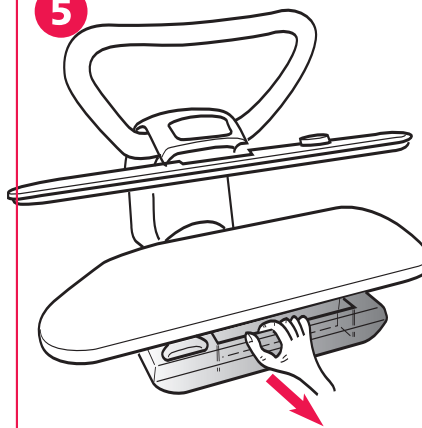
Open the press by gently raising the handle.

4



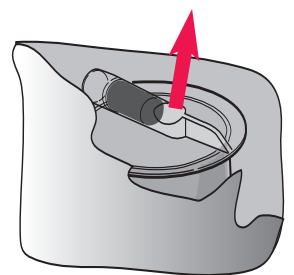
Take hold of the reservoir at both ends and pull it towards you until you see the fill hole (fill position)

5



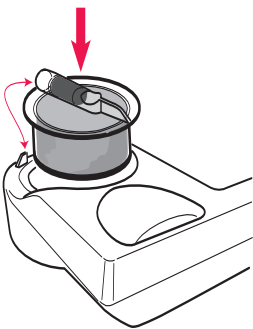
Take hold of the reservoir in the middle and pull it completely out (position for changing the anti-scale cartridge and emptying).

6



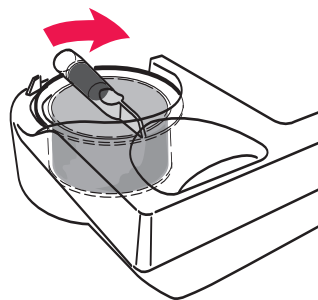
Remove the anti-scale cartridge from its plastic bag.

7



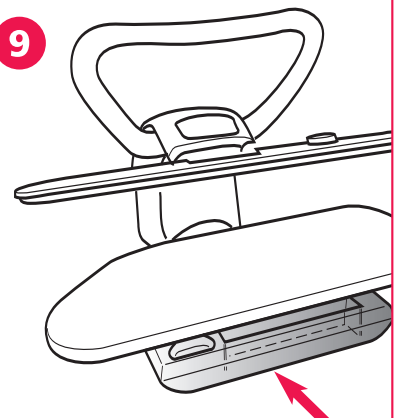
Insert it into the reservoir. The tube lines up with the mark on the reservoir.

8



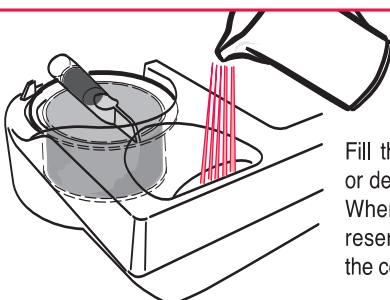
Turn the cartridge towards the right until it stops.

9



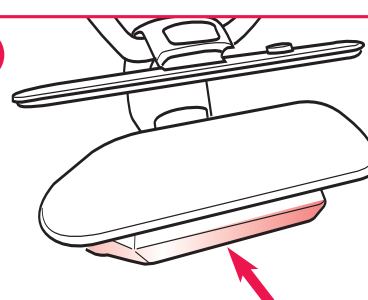
Replace the reservoir by sliding it in like a drawer up to the fill position.

10

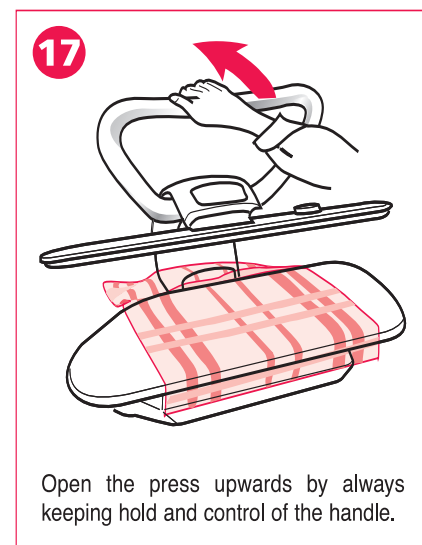
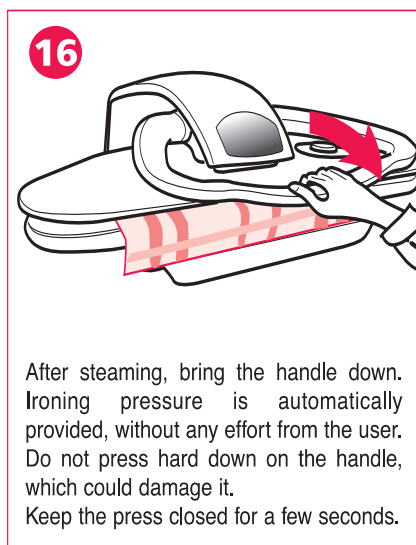
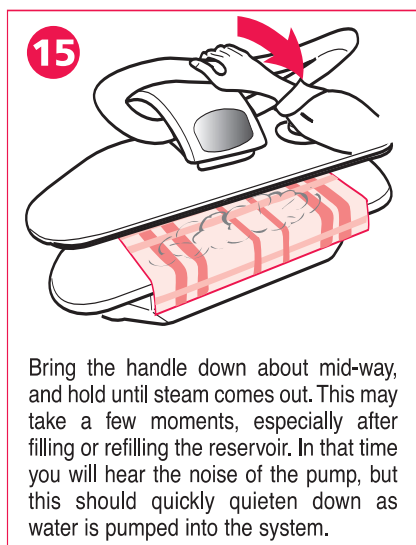
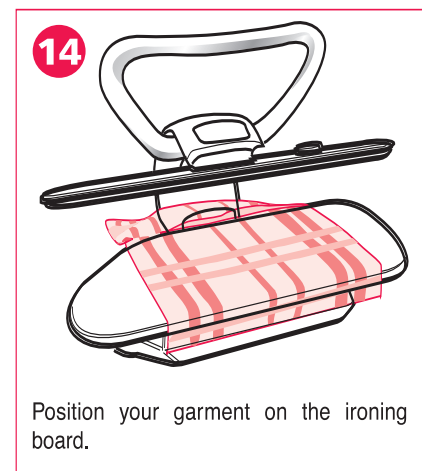
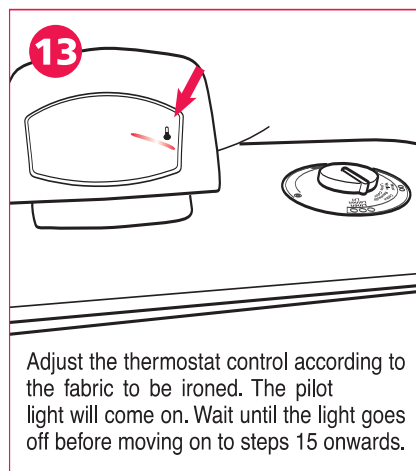
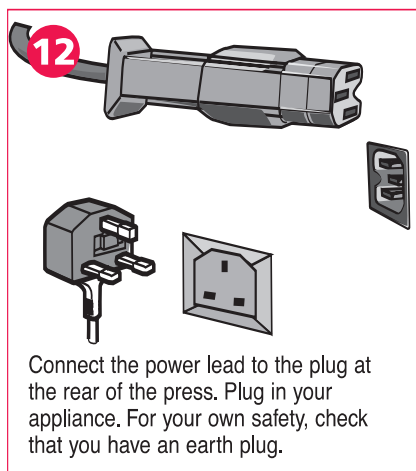


Fill the reservoir with tap or demineralised water. When refilling the reservoir **always** check the colour of the cartridge.

11



Push the reservoir right in to make sure of a firm connection with the appliance.



## For any further instructions, please read the instruction book carefully :

- ☐ Important safeguards
- ☐ Description
- ☐ Using your press
- ☐ Preparation
- ☐ Changing the anti-scale cartridge. Please note : to avoid any risk of scaling up (refer to instruction book), the cartridge must be changed as soon as all the cartridge changes colour.
- ☐ Maintenance
- ☐ Hints for pressing
- ☐ Pressing

## AFTER SALES AND REPAIR SERVICE

Should you have any queries or problems in operating your Domena appliance, Domena offers a free of charge Customer Help Line, which is **01825 76 88 99**

### Warranty repairs

In the unlikely event that your Domena appliance needs repair under warranty, the Domena Help Line operates a home collection and delivery service. All you have to do is :

- a) Ring the Domena Help Line number 01825 768899.
- b) Over the telephone arrange for a convenient day and location for the appliance to be collected.
- c) The appliance will be at the Domena Service Office the weekday after collection, and normally repaired within two working days.
- d) Domena will then contact you to arrange a convenient day, and location to return the appliance.

### Out of warranty repairs

Please contact the Domena Help Line 01825 768899.

# IMPORTANT SAFEGUARDS

When using your ironing press, basic safety precautions should be followed, including the following :

- Read all instructions before using the ironing press.
- Use ironing press only for its intended use.
- Before plugging in your ironing press, be sure the electrical information on the label on the bottom of the base agrees with your power supply.
- Always use a mains supply which has an earth connection, for your own safety.
- The ironing press should always be turned off before plugging or unplugging from socket.
- Never yank the lead to disconnect from socket ; instead, grasp the plug and pull to disconnect.
- Do not allow power lead to touch hot surfaces. Let the ironing press cool completely before putting it away.
- Do not operate ironing press with a damaged power lead or if the ironing press leaks or is damaged. To avoid the risk of an electrical shock, do not attempt to open and repair the ironing press ; take it to your nearest service centre for examination or eventual repair. Incorrect re-assembly can cause a risk of electric shock when the ironing press is used.
- Close supervision is necessary when using your press with children around.
- This appliance is not intended for use by persons (including children) with reduced physical, sensory or mental capabilities, or lack of experience and knowledge, unless they have been given supervision or instruction concerning use of the appliance by a person responsible for their safety.
- To avoid a circuit overload, do not operate another high wattage appliance on the same circuit.
- If an extension lead is absolutely necessary, a 10-ampere cord should be used.  
Power leads rated for less amperage may overheat. Care should be taken to arrange the lead so that it cannot be pulled or tripped over.
- Never immerse the machine in water or other liquids.
- Only use cold water.
- Do not place your hands between the ironing/steaming surface and the heating plate whilst pressing.
- For any repair, take your machine to a registered after-sales service centre, to ensure that the repair complies with the standards indicated in this instruction book.
- Any repair done by an unauthorized person would cancel the warranty.

## GUARANTEE CARD

Thank you for choosing this product from DOMENA. It is built to the highest standards and we hope it will give you many years of trouble-free service.

### **One-Year Product Guarantee**

Your DOMENA appliance will be repaired free of charge for one year from the date of purchase if it fails to work properly because of the materials or workmanship we have used, subject to the following conditions:

Delivery to and from our authorised service agents will be at your risk and cost. The guarantee does not cover damage caused by abnormal or professional useage or by not complying with the instructions for use provided with the product.

The guarantee does not cover appliances that have been altered or serviced by non-DOMENA-approved agents.

### **After-Sales Service**

For the address of your nearest Authorised Service Agency simply contact our Customer Services in England, Telephone 01825-768899

**This warranty is given in addition to and does not affect your statutory rights.**

**For countries outside the United Kingdom, please contact the Consumer Relation Desk in your country.**

DOMENA Ltd.  
Unit 20, Ridgewood Industrial Estate  
Uckfield  
EAST SUSSEX TN22 5QE  
Tel: +44 (0)1825 749498  
Fax: +44 (0)1825 749499

The appliance you have just bought conforms to the low voltage European directive 73/23/CEE relating to safety and the CEM directive 89/336/CEE relating to electromagnetic compatibility, amended by 93/68/CEE.

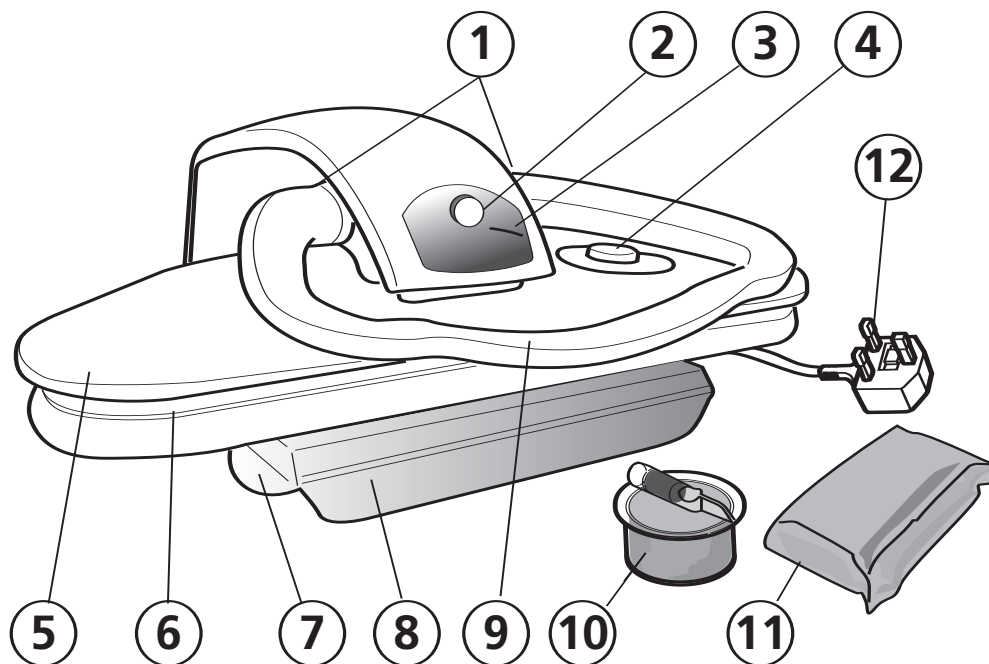


The manufacturer reserves the right to make changes and alterations to the product without prior notice.



# PRINCIPAL COMPONENTS

1. Locking buttons for carrying and handling
2. Eco button
3. Thermostat pilot light
4. Temperature control dial
5. Heating plate
6. Cushioned ironing/steaming board
7. Location of the anti-scale in cartridge into the reservoir
8. Water reservoir
9. Handle to open/close the press and progressive pressure of the heating plate. Automatic steam output control
10. Anti-scale cartridge
11. Pressing cushion
12. Mains lead



## SETTING UP

**1.** Unpack the appliance. Lay the appliance on a stable, heat-resistant surface. A table is the ideal.

## USING YOUR PRESS

### 2. SECURITY LOCK

To prevent accidental opening, your ironing press is locked for safety. Gently press the handle down and push the two locking buttons on the handle upwards. Open the press by gently raising the handle.

### 3. OPENING AND CLOSING THE PRESS

The handle is used to open and close the heating plate. By lifting it with your hand, the pressure is released and the machine opens. By bringing the handle down, the machine closes and the pressing pressure increases until it automatically engages at maximum pressure.

**Caution : The press opens automatically. Always hold the handle while opening.**

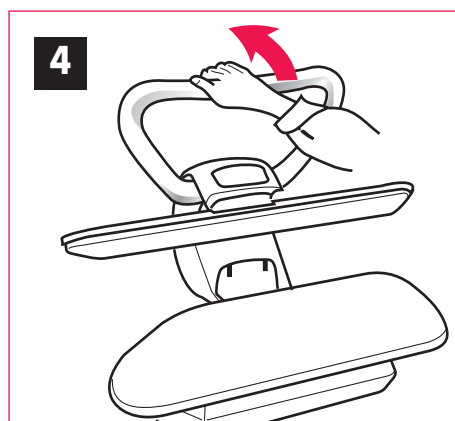
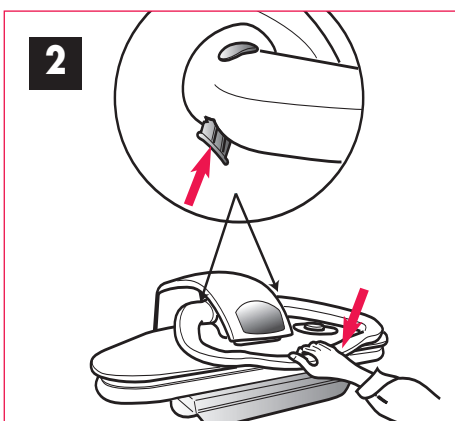
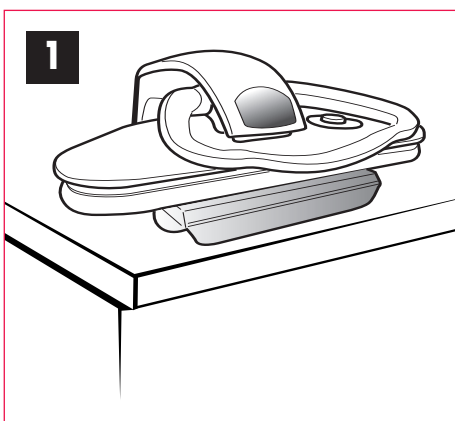
The handle also operates the automatic steam output (see : Steam generation).

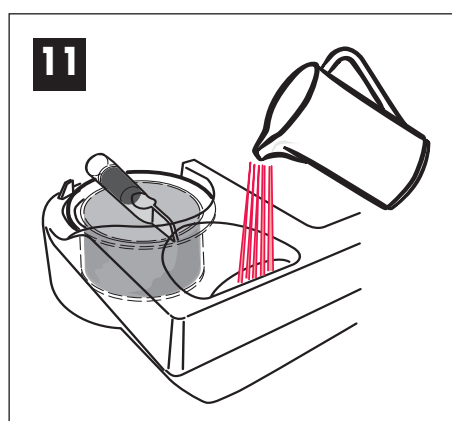
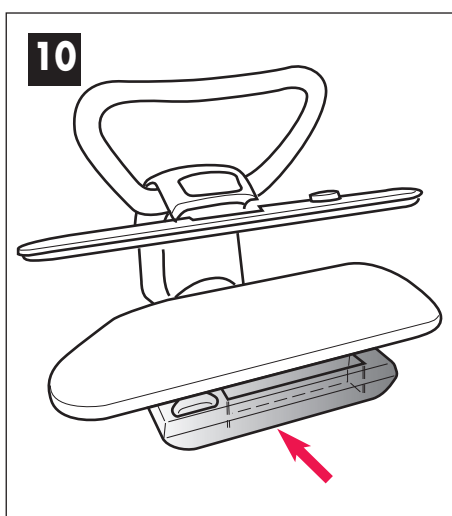
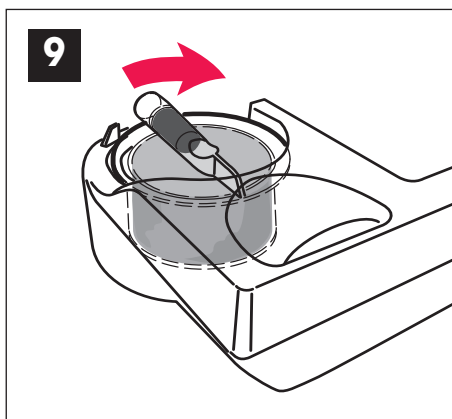
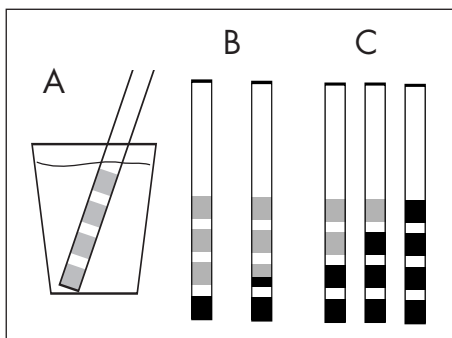
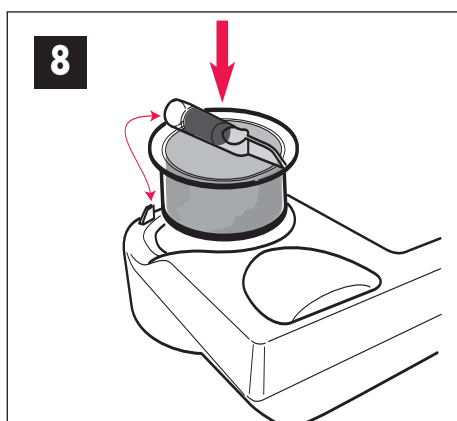
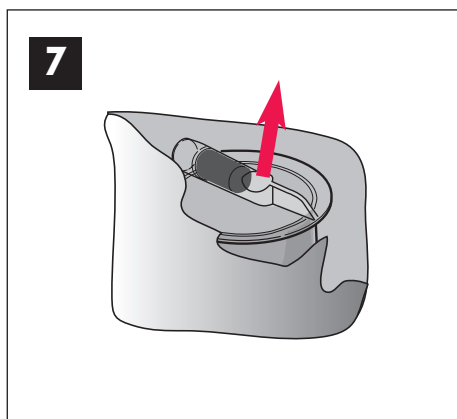
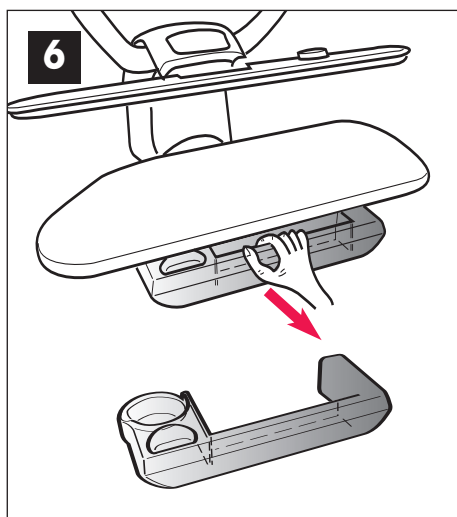
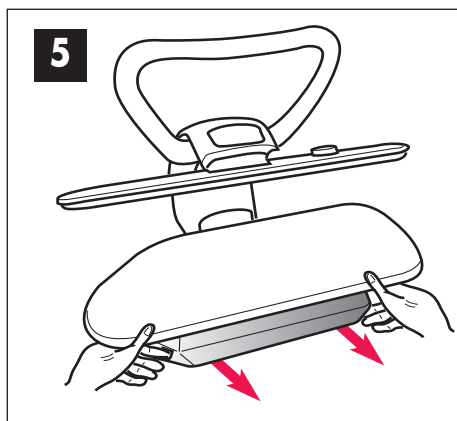
### 4. MAXIMUM OPENING

To obtain the maximum opening of the press : open the press and continue to gently bring the handle upwards.

The ironing board access is wide and the board can even be used as a normal ironing board if desired.

The maximum opening position allows large items to be pressed easily and can also be used for folding the laundry. The heating plate returns automatically to its original position when lowering the handle.





## TYPES OF WATER

**You can use:** Tap water, distilled water for irons.

**Do not use :** Rain water, water from the fridge, water from any evaporating appliance, water produced by a condenser tumble drier.

## Choosing your water

You can use either tap water or distilled water for irons. Depending upon the calcium level contained in your tap water as well as upon your weekly ironing time (average time : 2/3 hours), it can be more economical to use distilled water for irons (not for car batteries). In this case, your cartridge should last up to 1 year (depending on the volume of your ironing and on the quantity of steam you ask for).

A. Dip the strip 1 second into tap water.

Air the strip for a few seconds and wait for the result in approximately 1 minute.

## Recommendation

B. 1 or 1 1/2 mauve square : you can use tap water

C. 2 or more mauve squares : we advise you to use distilled water for irons.

## TIPS

**Noise :** To ensure constant steam output performance, your unit is equipped with an injection pump which is activated each time you lower the handle to the semi-closed steam position. It is louder when :

- 1) the water tank is empty
- 2) the unit is used for the first time
- 3) the anti-scale cartridge has just been changed.

The pump can be heard humming during normal use.

## LOCATING THE ANTI-SCALE CARTRIDGE FILLING UP THE WATER RESERVOIR

**5.** Hold the reservoir at both ends and pull it towards you until you see the fill hole (fill position)

**6.** Holding the reservoir in the middle, pull it completely out (position for changing the anti-scale cartridge and for emptying).

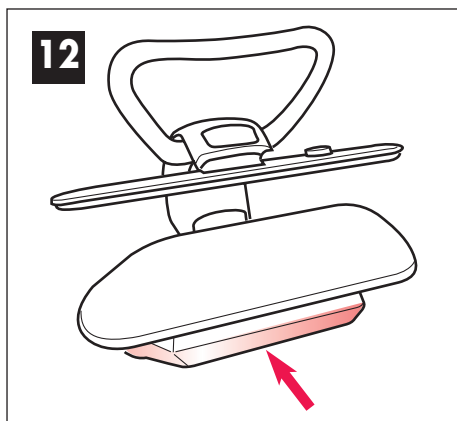
**7.** Remove the anti-scale cartridge from its plastic bag.

**8.** Insert it into the reservoir. The tube lines up with the mark on the reservoir.

**9.** Turn the cartridge towards the right until it stops.

**10.** Replace the reservoir by sliding it in like a drawer up to the fill position.

**11.** Fill the reservoir with tap or demineralised water



**12.** Push the reservoir right in to make sure of a firm connection with the appliance.

### Caution :

Never call for steam when there is no water in the reservoir. You could damage the pump.  
Never fill the reservoir with hot water. Never add products containing alcohol or essences (perfume, eau de Cologne, lavender essence...) to the water.

**Warranty does not cover servicing of your appliance due to scaling up.**

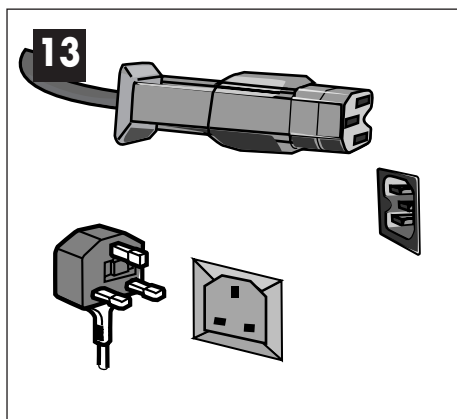
### 13. Plugging in the ironing press

- Connect the power lead to the plug at the rear of the press.
- Connect the power lead to the socket outlet and switch on. For your own safety, check that you are using an earthed plug.

## Electrical safety


If the machine is plugged in and closed for about 10 seconds, the electrical heating is automatically cut off.

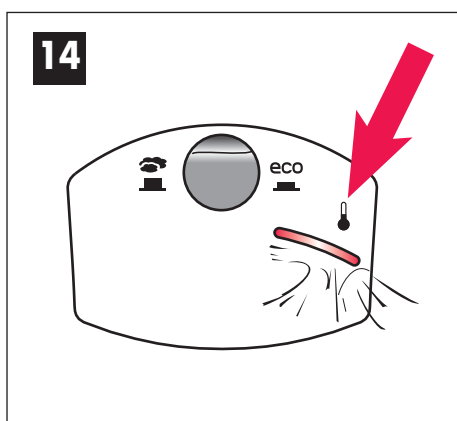
Opening the machine. The electrical heating switches on again automatically.



## 14. Temperature control

- Having switched on your press, the temperature pilot light will come on at the same time.
- The temperature pilot light goes out when the temperature corresponding to the selected position on the thermostat is reached.  
It will go on and off regularly during the ironing.

**Caution :** the pilot light will not come on when the thermostat is at the  position but the steam generator is heating.



## 15. SELECTING THE PROPER TEMPERATURE

The quality of the ironing depends both on the quantity of the steam you use and partly on using a suitable heat.

Labels on articles and garments indicate the correct ironing temperature using the following International Pressing Symbols :

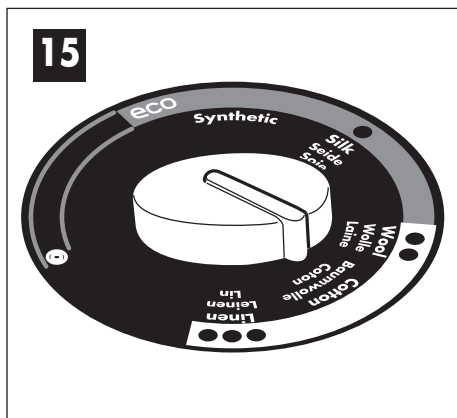
- Minimum heat
- Medium heat
- Maximum heat

These symbols are marked on the thermostat control dial on the appliance.

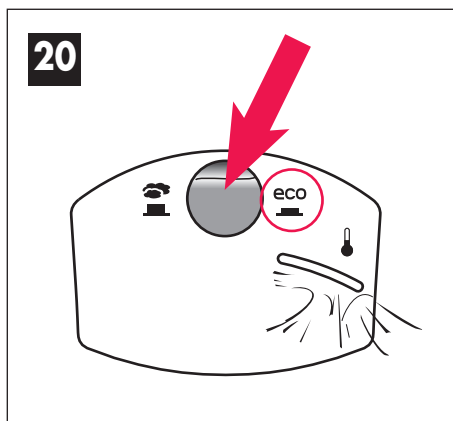
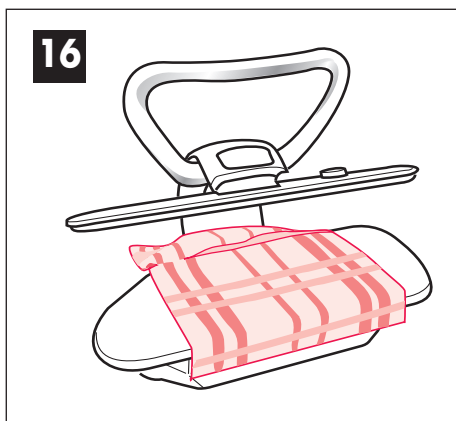
- Turn the thermostat to the position corresponding to the fabric to be pressed and to the symbol indicated on the fabric label.

When the thermostat is opposite the symbol , the hot plate does not heat up.

We recommend that you press the items requiring the coolest setting first, building up to the maximum position last.



Type of fabric	Thermostat adjustment	Steam quantity
Synthetic fibres Acetates Polyacrylics Polyamides	NYLON ●	Dry or very little steam
Natural animal fibres Silk Wool	SILK - WOOL ●●	Moderate steaming time
Natural vegetable fibres Cotton - Linen	COTTON - LINEN ●●●	Maximum steaming time



## STEAM GENERATION PRESSING

After plugging in your steam press, the steam generator will be ready to steam after about 3 minutes.

The eco switch should be in steam position (ie not engaged).

**16.** Position your garment on the ironing board.

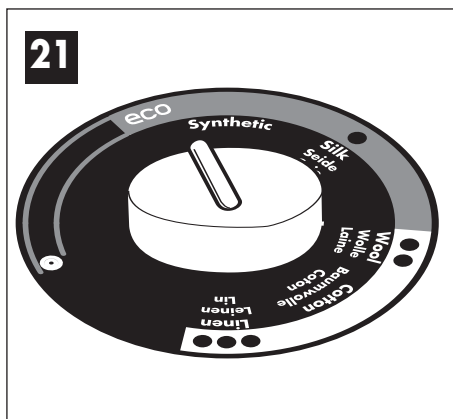
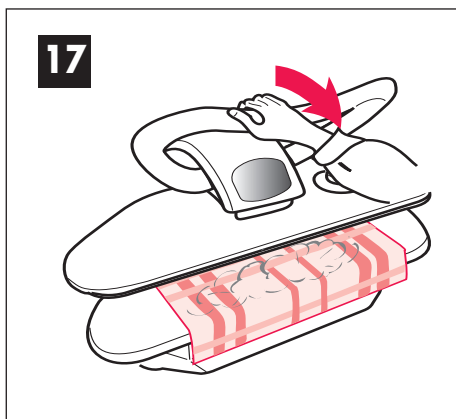
**17.** Lower the heating plate using the handle. In the half closed position steam will automatically be generated for as long as required.

**18.** Close the press in order to obtain the automatic pressure.

Leave the press closed a few seconds in order to dry and press the garment.

**19.** Open the press by lifting the handle.

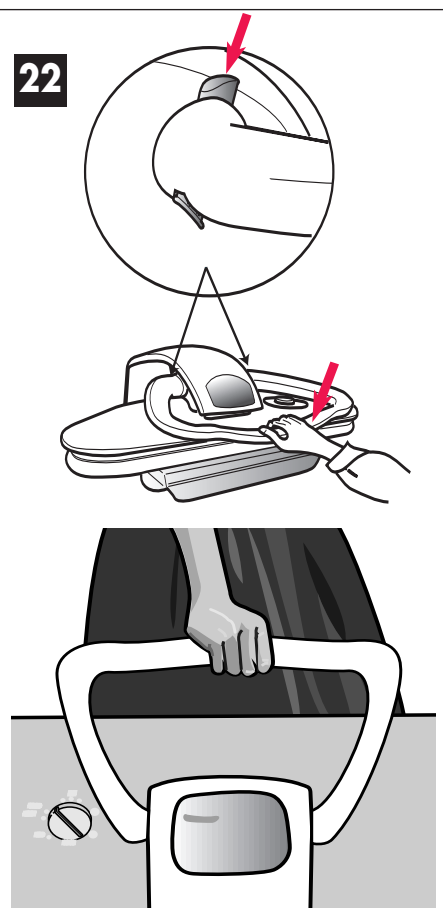
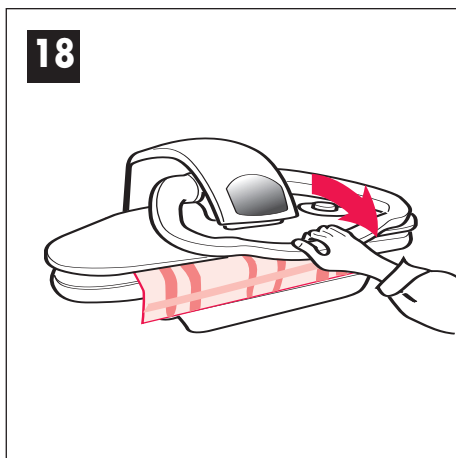
Do not press down on the handle more that normal when closing the press : the pressure is automatic.



## First time steam generation

Your unit is brand new. The steam system will have to be started up.

- Put the anti-scale cartridge in place.
- Fill the water tank up completely (see above).
- Slide the water tank back into its housing, pushing it all the way in.
- Switch on your unit.
- As soon as the appliance is ready to produce steam, lower the handle to the steam position.



## ECO Function

By using the ECO settings, both the electricity and water consumptions will be reduced.

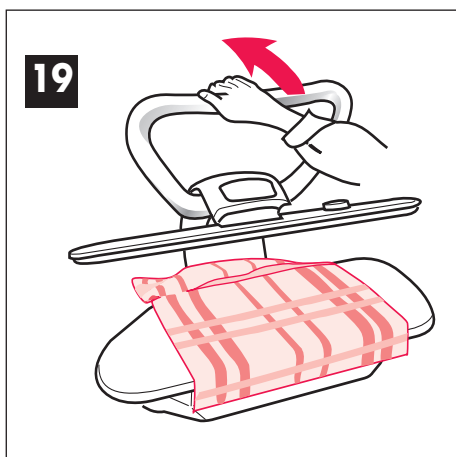
We suggest that you use the ECO mode for lightly creased or for the lighter or mixed fabrics. In this way you will save up to 50% on electricity and 50% on water consumption.

**20.** To activate the ECO function for steam push in the **eco** button.

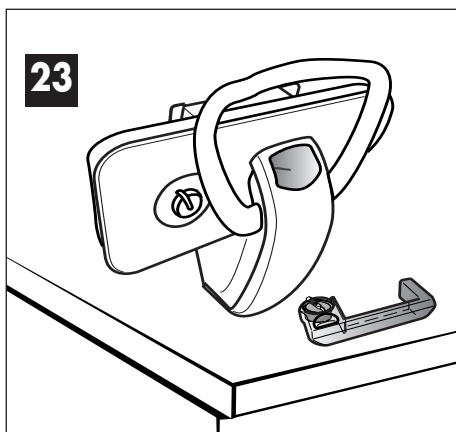
**21.** Turn the thermostat dial to line up with the green **eco** area marked on the dial.

## 22. EASY TO CARRY

It is easy to carry and store the machine. Ensure you lock the machine before carrying it by the handle by keeping the press closed and pushing the two locking buttons down.







## 23. STORING

When you have finished your ironing operation, switch off the appliance and unplug it from mains socket.

Let the press cool down for, about 30 minutes, before closing it.

**PLEASE NOTE :** Before carrying and storing vertically your ironing press in an upright position, it is essential that you empty the water reservoir to avoid any spillages.

## CHANGING THE ANTI-SCALE CARTRIDGE

### With tap water :

Scaling up is no longer a problem thanks to the anti-scale cartridge. Please remember that the resin will progressively change colour as it loses its efficiency. The cartridge needs replacing when the change in colour goes all the way up to the top. Each time you fill the water tank, check the anti-scale cartridge.

### With demineralised water :

The cartridge must be regularly checked and replaced as described above. However, by using demineralised water for domestic purposes, your cartridge should last for up to 1 - 2 years.

**CAUTION : Warranty does not cover servicing of your appliance due to scaling up.**



## 24. Anti-scale cartridge

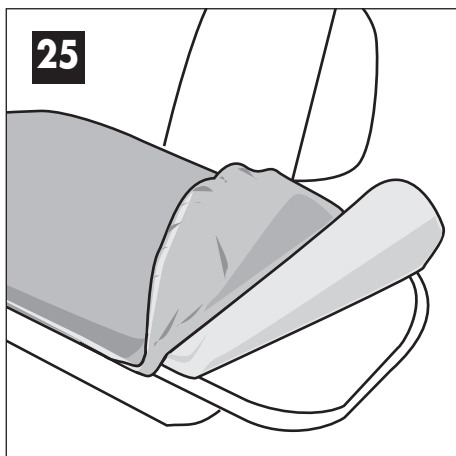
The reference number to order anti-scale cartridges for this press is 413 044.

The anti-scale cartridges are available in a blister pack from your retailer or the Domena Help Line.

## MAINTENANCE

### CLEANING

To keep your press perfectly clean, wash the outside parts with a slightly soapy water and carefully wipe it off with a soft cloth.



## 25. THE FOAM

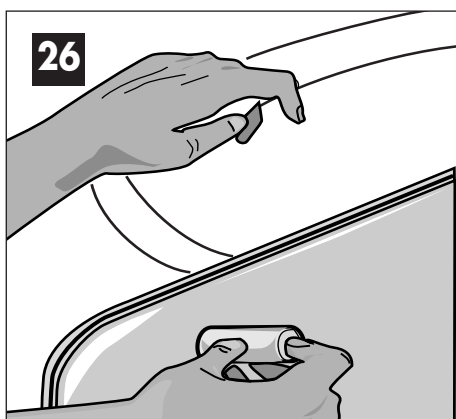
After extensive use, the foam under the ironing cover will become compressed, affecting the quality of your ironing. It should then be replaced.

## 25. THE COVER

Make sure that the cover is always tight enough so that it does not wrinkle up. It may be washed up to 40° C. Avoid mixing it with white items. If it shows signs of wear it must be replaced.

## 26. HEATING PLATE

In any ironing process the starches in fabrics, residues of cleaning products, and particles of yarn fibres can gradually create spots on the heating plate. To remove these rub the heating plate while still warm with strong paper or a soft cloth which does not leave fluff. If "hard to remove" spots appear on the plate (e.g. if synthetic fabrics like nylon have been pressed at too high a temperature), clean them off with a proprietary iron cleaning stick. Do not use scouring powders, alkalines (e.g. for ovens), abrasives or steel wool.



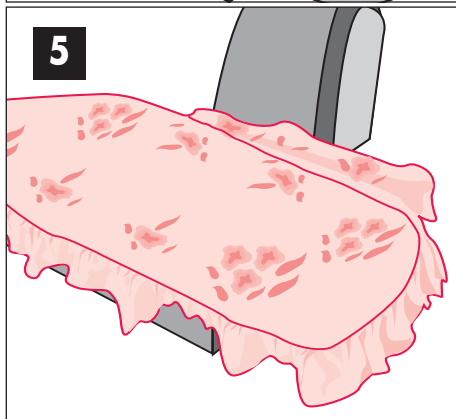
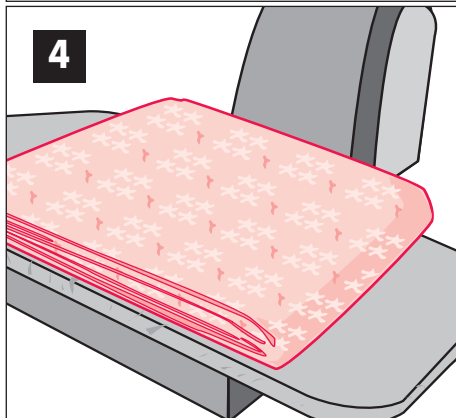
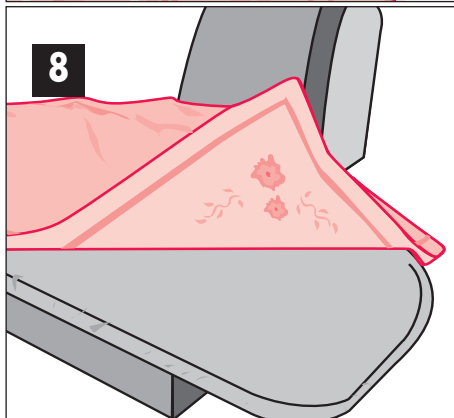
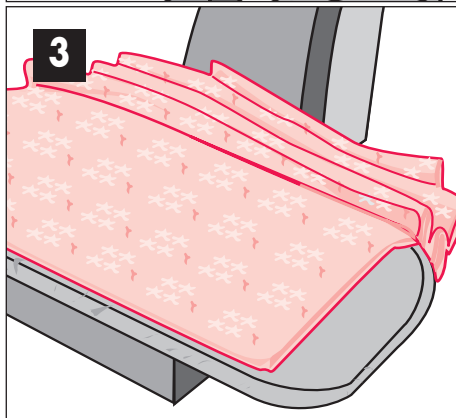
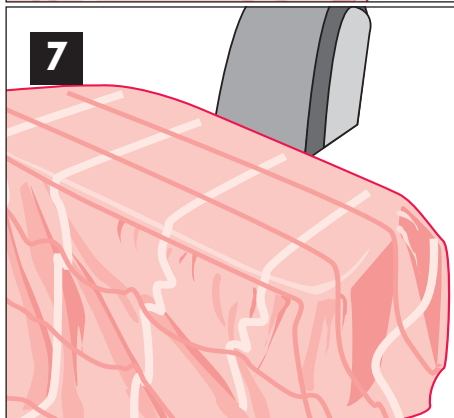
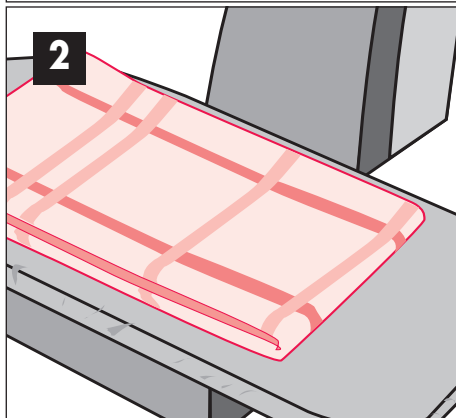
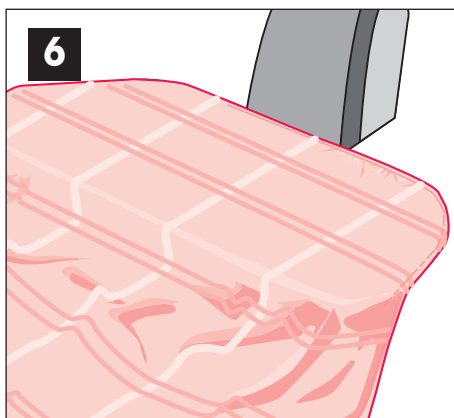
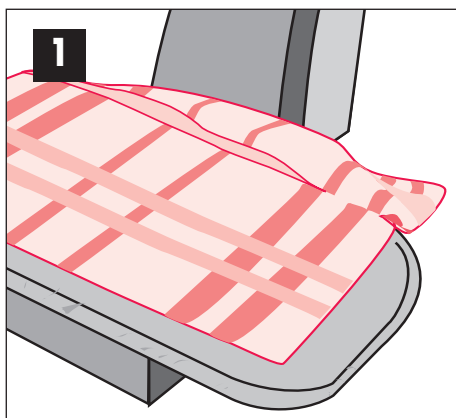
## STEAM GENERATOR

Your press will not scale up if you follow the above instructions carefully. Failure to follow the recommendations will result in the steam generation system scaling up more rapidly, and the steam output constantly decreasing.

Take your appliance to a registered after-sales service centre in order to have your machine de-scaled.

## HINTS FOR PRESSING

- ❑ The secret to successful ironing lies in laying your garment carefully on the pressing board and smoothing it out. Take care not to touch the heating plate with the backs of your hands.
- ❑ Always begin with items of laundry which require low temperatures perhaps without steam. To press nylon the correct heat will be reached in approx. 3 minutes.
- ❑ Before pressing, carefully smooth the garment on the board. This will prevent unwanted creases.
- ❑ As the pressing board is padded, you can press anything which has standard buttons without breaking them. Nevertheless be careful with synthetic buttons and zip fasteners which can melt.
- ❑ If the items have to be stiffened or starched, proceed in the normal way.
- ❑ If you wish, you may use a damp cloth when pressing.
- ❑ Condensation due to extended use or when beginning to use the press may cause water spots to appear on the ironing cover. Use the hotplate to dry it out.
- ❑ To press and bring out monograms or pieces of embroidery or when pressing buttons, place them downwards onto the ironing board for best results.
- ❑ Knitted garments can easily be ironed just by lowering the heating plate **without closing** the press. The steam will revitalise the fibres.
- ❑ To remove unwanted creases, slightly moisten them and press.
- ❑ When finished ironing, let the press cool down. It is easy to carry and store and do not forget to close and lock it.
- ❑ Your press can be stored vertically without any risk. It is essential that you empty the water reservoir to avoid any spillage.



## PRESSING

### HANDKERCHIEFS, NAPKINS, TOWELS, KITCHEN LINENS, ETC.

1. Carefully place the handkerchief or the napkin on the ironing board and press.
2. Fold once and press again.  
Finish folding, press.

### BED SHEETS, TABLE CLOTHS

3. Fold the bed sheet or the table cloth three or four times in length or width.  
Place the folded sections at the back of the ironing board.  
If necessary, use the maximum opening position for easier access.  
Press the first part, then progressively pull the other folds towards you and press.  
Meantime, the pressed sections will rest on your lap.
4. Finally give the sheet etc. a last pressing by just holding the hotplate down on the sheet, but without the full pressure, as shown in fig. 4.

### DUVET COVERS AND PILLOW CASES

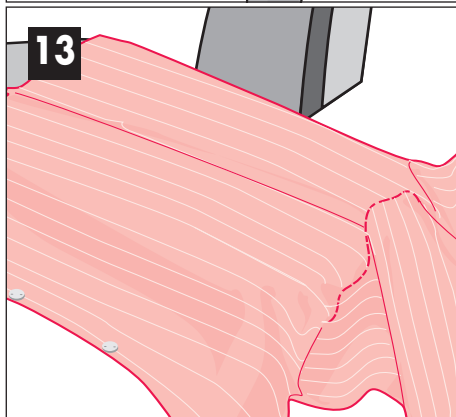
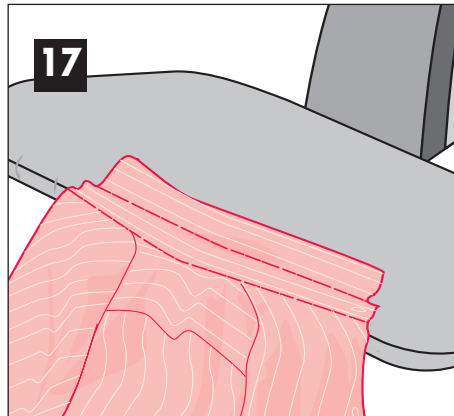
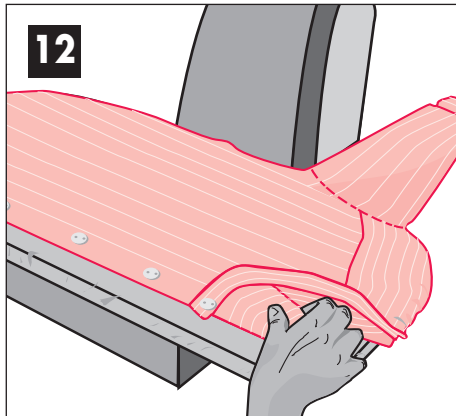
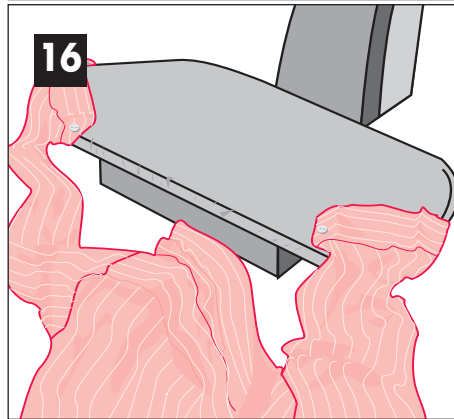
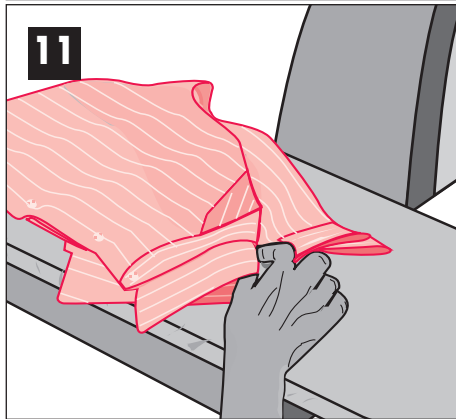
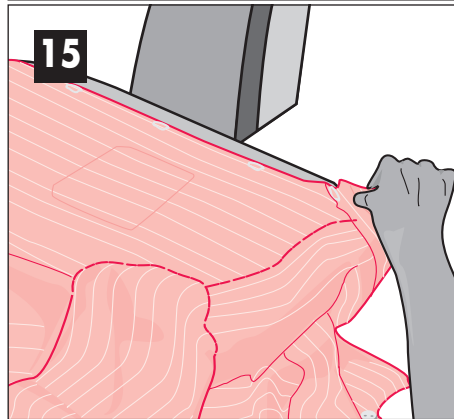
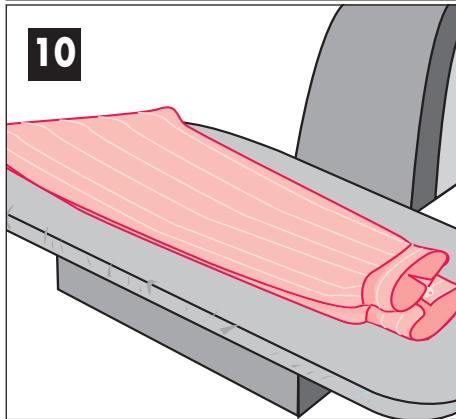
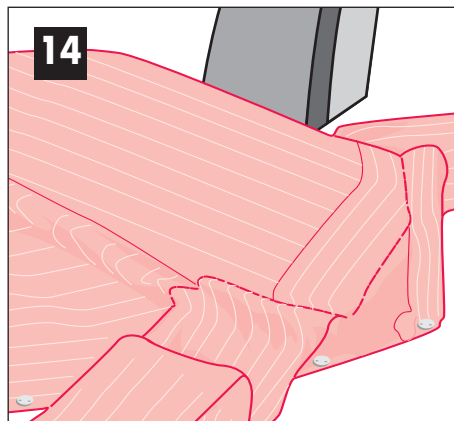
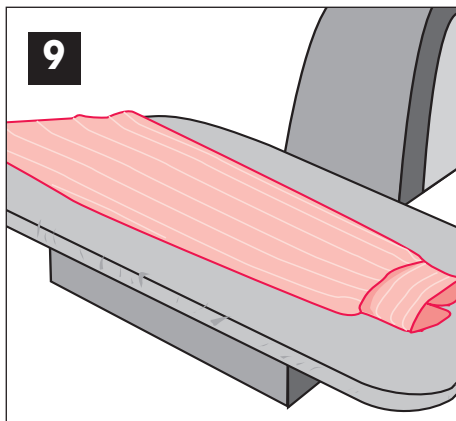
5. First press the buttoned end, with buttons downwards towards ironing board.  
As usual, fold in two or three times and press.

### FITTED SHEETS/VALANCES (WITH ELASTICATED ENDS/CORNERS)

6. Start with one corner. To iron without causing creases, stretch the sheet by pulling on the elastic and press.  
Continue pressing and moving the item round from left to right until you reach the next corner. Press this corner on left hand of board.
7. Handy hint : Fold bed sheets twice in width and press four layers (eight sides) at a time.

### MONOGRAMS AND RAISED PIECES OF EMBROIDERY

8. Press them before the rest of the item.  
Place them downwards onto the ironing board.



## SHIRTS

### Sleeves :

- 9.** Fold the sleeve lengthwise. The crease is formed along the side seam. Place the top of the sleeve along the ironing board. Press and open.  
Repeat the same for the second sleeve.

- 10.** Place the second sleeve on top of the first one.

Then bring the collar up to the cuffs.

- 11.** Hold the two sleeves and the collar in the right hand, the rest of the shirt in the left hand, and place the whole shirt to the back, moving the upper part of the shirt towards the right.

### 12. Front, buttonside :

Put the shirt opening to the front, arranging the garment so that the shoulder and neckline are lined up with the right edge of the board.

Hold the collar slightly pinched between the fingers so that the curve of the neck opening is flat on the board. Press.

### 13. Underarm section :

Move the shirt by slightly pulling it towards the right side, then move it towards you.

The side seam is against the front of the board. Press.

For a fitted shirt or blouse, make a pleat that will be ironed smooth when pressing the lower part of the shirt.

### 14. Back :

Continue in the same way by bringing the shirt gradually towards you, until you reach the front opening.

The collar seam should be against the edge of the board.

### 15. Front, buttonholeside :

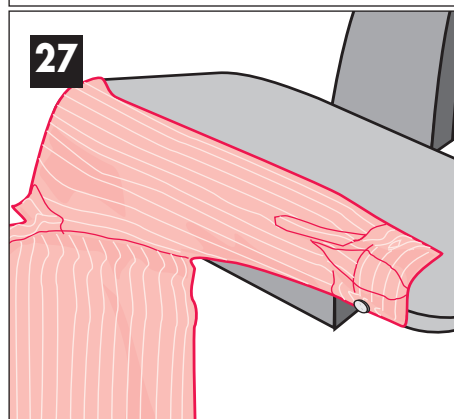
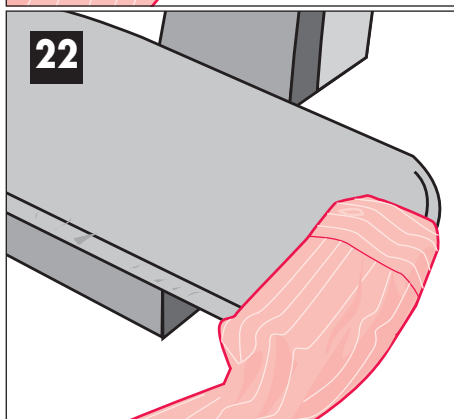
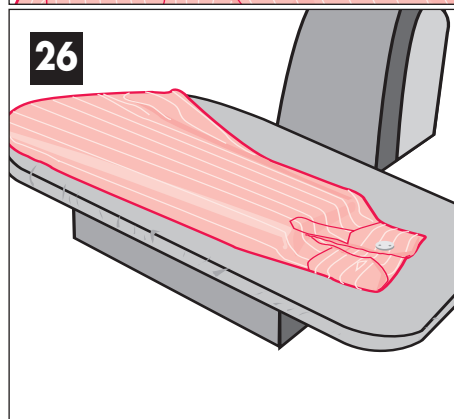
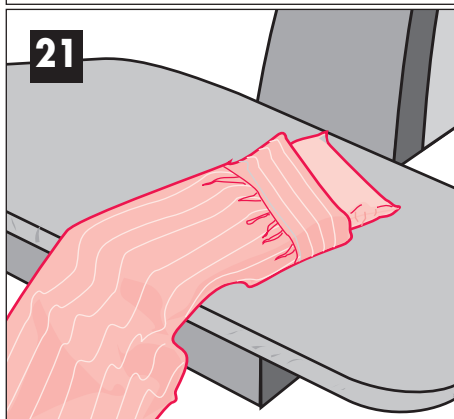
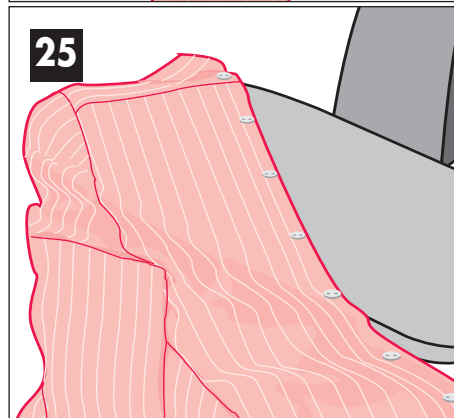
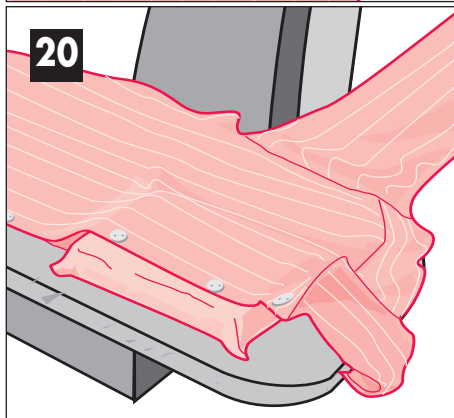
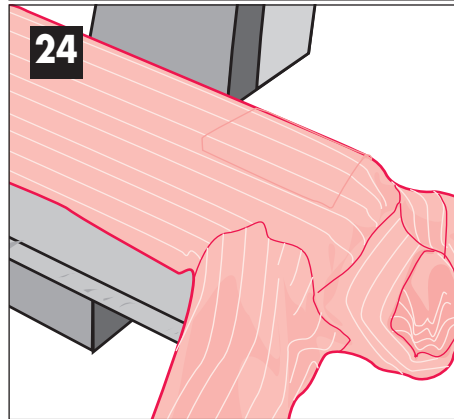
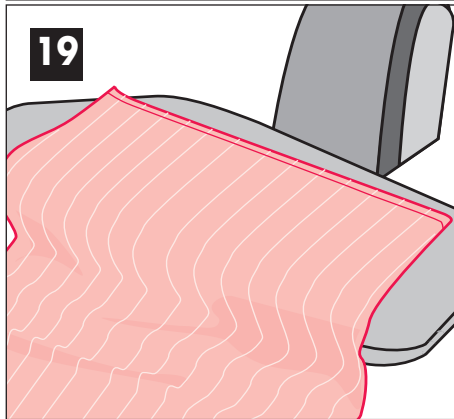
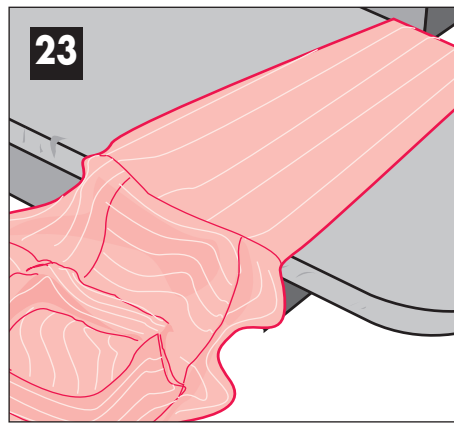
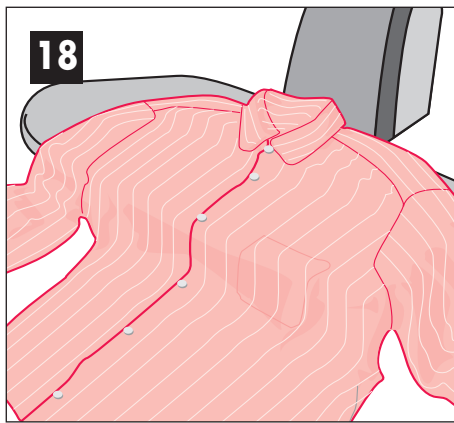
For the front opening, again hold the collar pinched between the fingers so that the curve of the neck-opening is flat on the board. Press.

### 16. Cuffs :

Press the cuffs (wristbands).

### 17. Collar :

Press the reverse side once and then the right side once. Stretch the collar by hand before pressing. (n.b. if you wish you can press the collar and cuffs at same time as the sleeves)



### 18. Folding :

Fold the collar by hand and button up the shirt while it is still warm.

### 19. Lower part of the shirt :

Steam to smooth out any creases made and press the front. Slightly moisten if necessary.

### SOME OTHER WAYS FOR AN EVEN BETTER LOOKING FINISH

**20.** For shirts with a hard, starched or large collars place the pressing cushion along the shoulder seam. Slightly lower the heating plate so that it just touches the shirt.

### 21. Pleated sleeves on the cuff

To press the pleats on the cuff, use the small cushion by sliding it into the sleeve up to the beginning of the pleats.

Arrange the pleats on the cushion. Lower the heating plate without using the full automatic pressure. Then, turn the sleeve and press the other side.

### 22. Cuffs

Place the wrist opening on the side of the board. Press, pulling the sleeve smoothly towards you. Press the cuffs as usual.

### 23. To finish the sleeve

Place it on board at an angle and press.

### 24. WOMEN'S SHIRTS AND BLOUSES

These garments are pressed generally like shirts.

### FITTED SHIRTS AND BLOUSES

For fitted blouses, press in two stages. First one fitted side, then the other.

**25.** Finish afterwards by pressing one area after another using the end of the board to help you.

N.B. If you don't want creases on the sleeves, utilise the small cushion to press, or a rolled soft thick flannel. Use the small cushion for the shoulders or the neck opening of a shirt or a blouse with a special neckline.

### 26. Sleeves without pleats

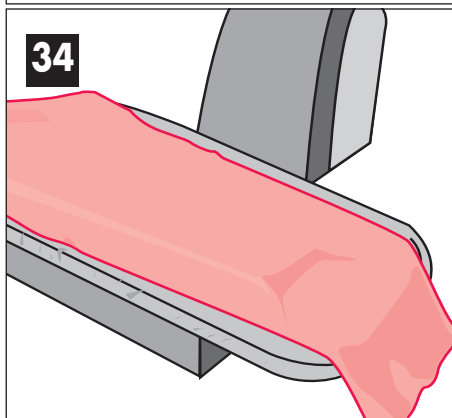
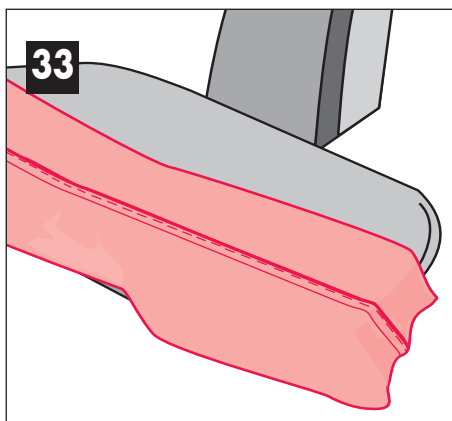
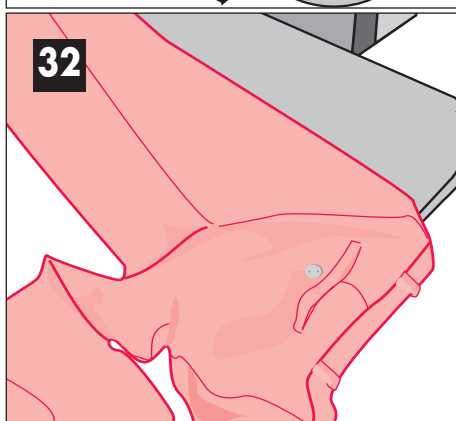
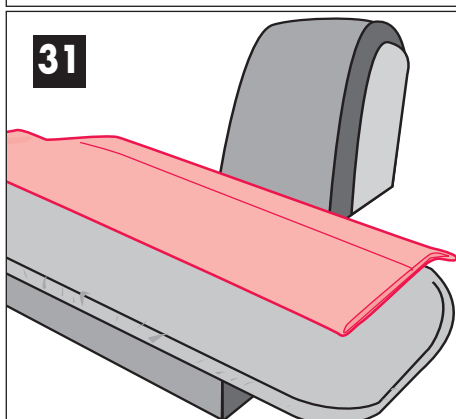
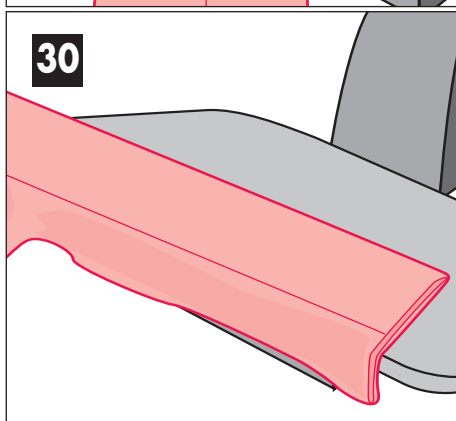
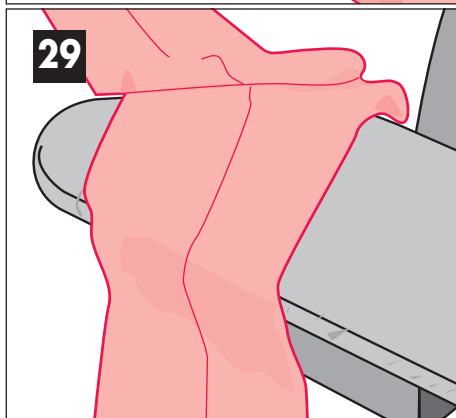
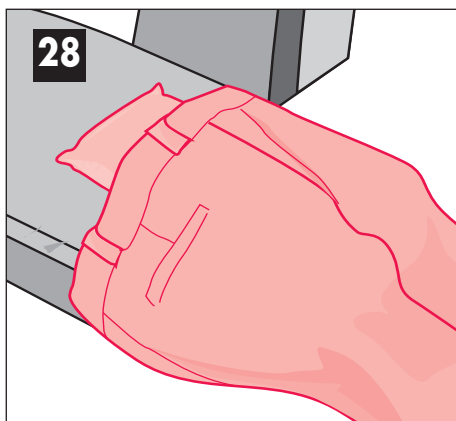
Use the small cushion or a rolled soft thick flannel.

### 27. Pressing sleeves without leaving creases

Place the sleeve on the board, folded from the wrist to the middle of the shoulder. Press. Two creases will be marked initially.

Then steam or dampen and smooth out the two creases with the sleeve folded along the under-arm sleeve seam. Let the sleeve pass the front of the board.





## TROUSERS FOR MEN OR WOMEN

For woollen items, use a damp cloth if necessary.

**28.** Press the waist and the belt holder on the edge of the board.

You can use the pressing cushion accordingly.

Press, then open, etc and rotate waist around the edge of the board.

**29.** Place the crotch flat on the left-hand side of the board, lining it up with the shape of the board. Press and open.

Repeat the same for the second leg.

**30.** Lay the front crease flat on the board starting with the upper part. The seams must be on the edge of the board as any pressure on them could result in marks or shine.

Press and open.

Move the trousers to press the lower part of the leg.

**31.** Move the leg to press the back crease of the lower part of the leg. Press and open. Again place the seam at the edge of the ironing board.

**32.** Finish with the back crease on the upper part of the trousers.

Press and open.

Press the second leg.

## 33. JEANS

The stitching on jeans has a tendency to shrink more than the fabric. This causes pulling. If necessary, pull the leg to 'stretch' the seams once the machine is closed, and as the pressing proceeds.

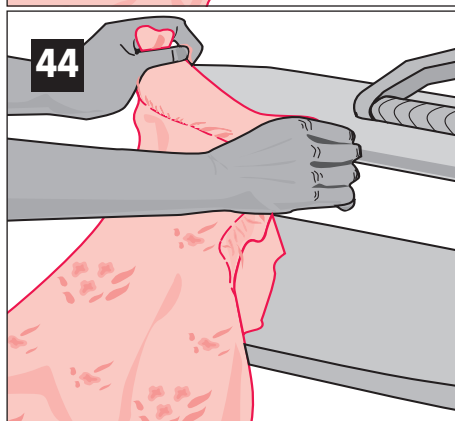
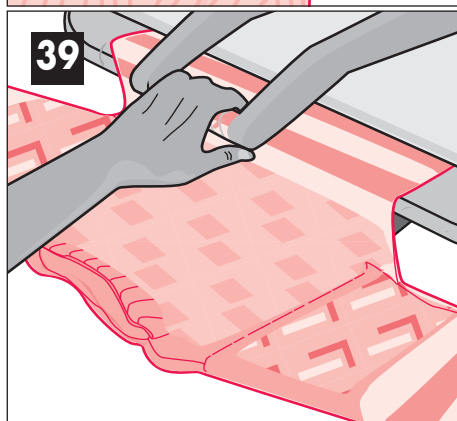
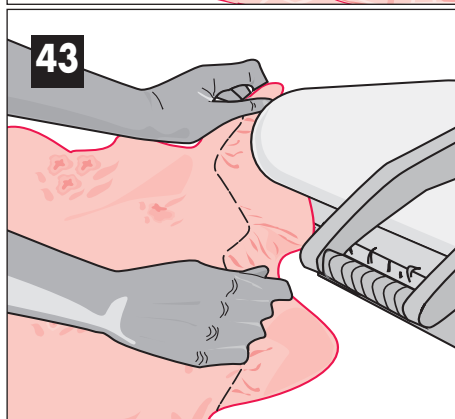
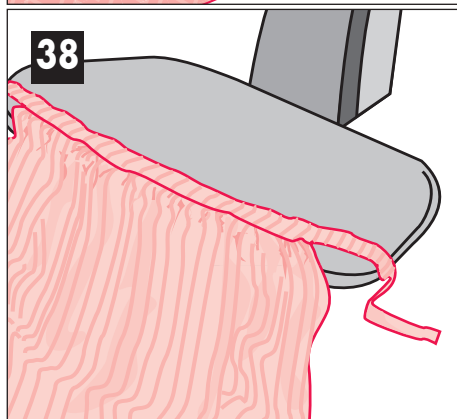
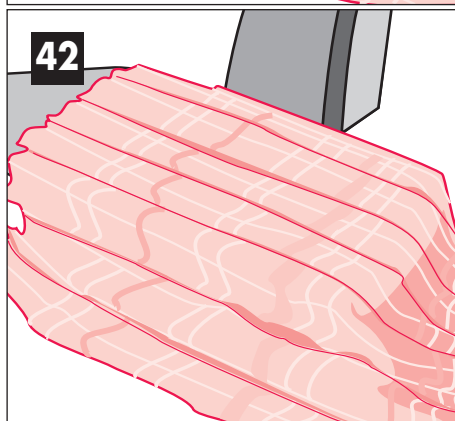
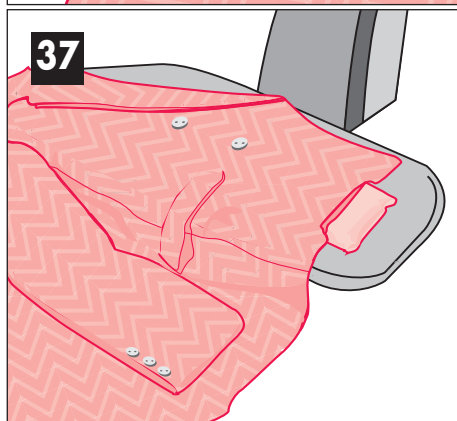
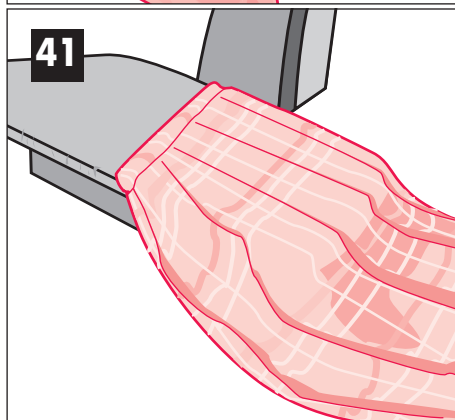
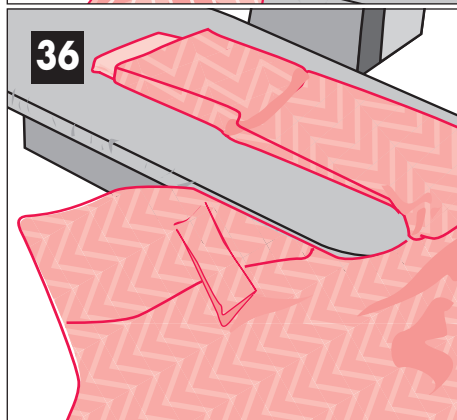
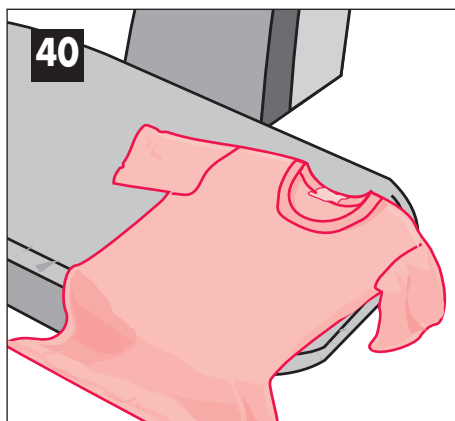
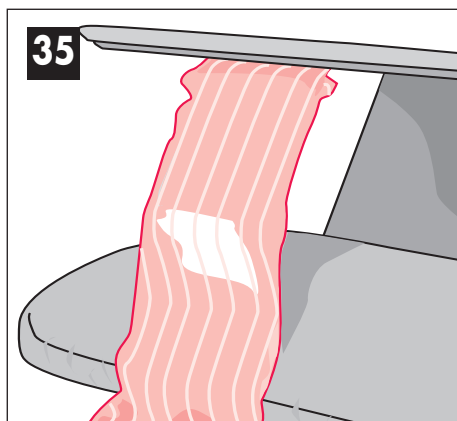
Press the waist, turning it around the board, as for any other pair of trousers. Place the leg on the board, folding it along one of the two seams. Leave the other seam out of the board, as well as the hem.

n.b. For material in velvet, press them preferably on the wrong side in order to avoid "shine" marks.

## 34. TROUSERS WITHOUT CREASES

If the leg is wider than the board, leave the edges outside of the board. Move the garment to press the other unpressed sections.

In the leg is narrower than the board, use the cushion or introduce a rolled soft thick flannel or cotton into the trouser leg. Press in two or more stages if necessary.



## SOME OTHER USES OF THE PRESSING CUSHION

**35.** For certain shapes, ironing can be completed using the pressing cushion, supplied with the machine. It is slipped into or under the garment, in the especially difficult areas.

### 36. Shoulder

Rub the shoulder, with the cushion inside it, against the heating plate.

**37.** To remove creases in the sleeves of a jacket. To remove creases in the flaps of a jacket (with or without a cushion).

## 38. APRONS

Press first the waistband and the pleats, then the rest of the apron.

## 39. SWEATERS, KNITTED GARMENTS

The ironing of hand or machine knitted garments is done by only using steam - no pressing at all.

Lower the heating plate leaving a minimum space of 5 cm between the garment and the heating plate, without closing the handle.

The steam will revitalise the fibres.

## 40. TEE-SHIRTS (cotton)

The sleeves :

Place them flat on the board, adapting the shape of the shoulder to the shape of the board. Press and open.

The body :

Place it flat. Press and open.

## 41. SKIRTS WITH PLEATS

Slip waist on end of board. Press.

Arrange pleats carefully.

**42.** To press the pleats part you can pin them onto the padded pressing board. You can dampen as well (according to the type of garment).

## FLOUNCES

**43.** Begin to press the centre of the flounces rubbing them by hand against the edge of the heating plate.

**44.** Finish by using the left end of the board. Close the machine and pull the flounces gently towards you.

## Environmental Protection

Your electrical appliance comprises numerous recyclable elements.

The normal disposal of these elements may trigger harmful effects on human health and the environment.

It is technically impossible to sort the waste once it is combined.

The recycling of appliances which have to be disposed of is the responsibility of the consumer.

The various packaging items can be recycled. Dispose of these in the containers provided for this purpose.

When the time comes, your appliance should not be disposed of with your usual household refuse.

Use a pair of pliers to cut the electric cable to prevent it from being re-used.

Dispose of the device at an approved collection centre in the container provided for this purpose so that it can be re-processed.

If you have a battery-operated device or an apparatus fitted with a remote control system, remove the batteries and dispose of these at the approved location.

